

YEAR 6

CURRICULUM MEETING



What will we be covering?

- ▣ Our learning culture
- ▣ COVID protocol
- ▣ Staffing
- ▣ Maths overview
- ▣ English overview
- ▣ RE overview
- ▣ RHE
- ▣ Expectations and Responsibilities in Year 6
- ▣ SATs
- ▣ Home learning
- ▣ Transition into Year 7
- ▣ School Journey
- ▣ Safeguarding
- ▣ E-Safety

Our Learning Culture

- ▣ Independence
- ▣ Respect
- ▣ Enthusiasm
- ▣ Collaboration
- ▣ Growth Mindset



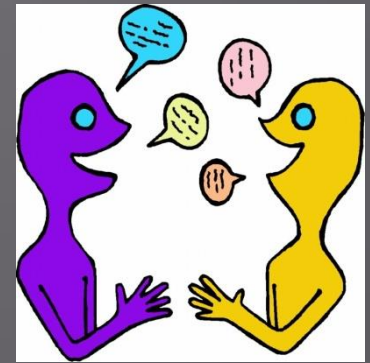
COVID 19

- ▣ Symptoms- stay at home if you have symptoms and get a test. Only isolate if you have symptoms, are not fully vaccinated and are over 18. All family members should get a PCR test.
- ▣ We continue to wash hands regularly and use hand sanitiser or wash hands whenever we enter or leave the classroom.
- ▣ We request that one parent from each family enters the playground at drop off and collection so that social distancing can be maintained as far as possible. Masks are encouraged as we begin to approach our normal routine in larger numbers.

Staffing

- ▣ Children are expected to come to school in their PE kits on Mondays and Thursdays.
- ▣ The children will have PE with Mr Reilly, French with Madame Reeve and Music with Ms Draper on a Wednesday.
- ▣ 6SY will also be taught by Mrs Grace and Miss Sonenfeld on a Tuesday and by Mrs Kaur on a Wednesday morning.
- ▣ 6S will also be taught by Mrs Grace on a Tuesday morning and Madame Reeve on a Thursday morning.

Talk Partners



- ▣ Changed regularly
- ▣ Children must persevere even if they don't normally choose to work together – that's real life!
- ▣ Talk partner evaluations:
 - Weekly
 - Children agree what they think a good talk partner is
 - They are accountable for their feedback – it must be constructive
- ▣ Followed through in Celebration assemblies on Friday

Questioning



- ▣ No hands up
- ▣ Lollipop sticks used
- ▣ This encourages children not to switch off in the lesson and to always participate
- ▣ Talk partner discussion is always given
- ▣ Finger voting
- ▣ Show me on your whiteboard

Behaviour and Attitude to Learning

Three step escalation: Reminder, Warning and Timeout

Children will be asked to move their name to the reminder when they display low level disruption in the classroom and/or not following the school and classroom rules

Children will be moved on to the warning and then timeout if they continue to display this behaviour

There may be some instances where an instant 'Timeout' is required and parents/carers will be informed if this is the case

Charts are reset at the end of each session.

Behaviour and Attitude to Learning

- ▣ High expectations of behaviour across all aspects of school life.
- ▣ Children are expected to take pride in their work, both the content and presentation.
- ▣ Books are to be looked after.
- ▣ Neat handwriting, and presentation policy followed throughout.
- ▣ All children aim to have fluent cursive writing.

Behaviour and Attitude to Learning

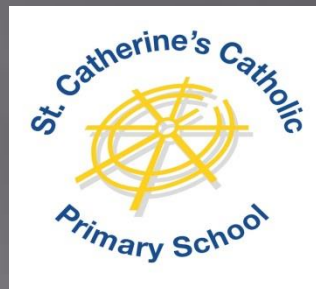
Children are to only read books from the school library (safeguarding)

Positive Behaviour Initiatives:

- Positive praise
- House stars
- Gold star
- Secret Student
- Marble jar
- Headteacher's sticker

Has anybody got any questions?

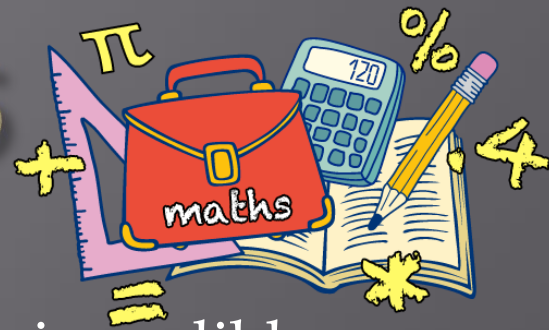
Please use the chat function to write any questions and we will answer them at the end of the presentation.



Curriculum Maps & Topics

- ▣ At St Catherine's we have ensured our curriculum map meets the needs of all our learners.
- ▣ Wellbeing toolkit
- ▣ The topics are exciting and are listed on the school website. There is a greater focus on learning through shared experiences. Please look at the maps and support your child by taking them to places such as museums, galleries, parks, country side which will inform their learning.

Maths in Year 6

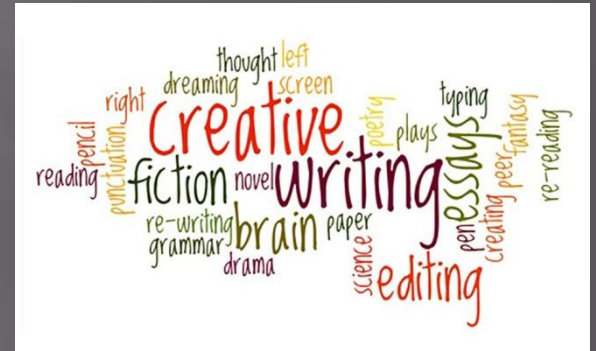


- ▣ 3 levels of challenge – fantastic, amazing, incredible
 - Children must consider carefully what the task is and whether they feel they can attempt it from their understanding of the input
- ▣ Ensuring consolidation and understanding.
- ▣ Times tables championship
- ▣ Challenging: fluency, reasoning and problem solving
- ▣ All concepts are learned through three cognitive steps include concrete, pictorial and abstract.
- ▣ Mastery of concepts
- ▣ Application of skills - formal methods
 - real life problem solving
 - investigations

English in Year 6

Developing a personal writing style

- ▣ Complex sentence structure
- ▣ High level punctuation used
- ▣ Varied and rich vocabulary
- ▣ Writing stamina
- ▣ The Alan Peat sentence types



Reading - VIPERS

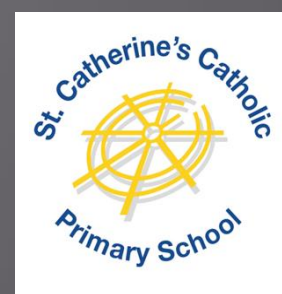
- ▣ Guided reading will be done as a whole class activity
- ▣ Commenting on writers use of language and using techniques learnt in their own writing
- ▣ Focus on comprehension and inference

R.E. in Year 6



- ▣ The Way, The Truth & The Life – Age related moderation throughout the Year after each unit of work. These feed into the end of year report
- ▣ Lead prayer services and masses
- ▣ Class Masses
- ▣ Visits to our local parishes- Mass, Stations of the Cross, Westminster Cathedral and other places of worship
- ▣ Leavers' Mass (date to be confirmed)

Collective Worship



- Worship is at the heart of St. Catherine's and is concerned with giving glory, honour, praise and thanks to God. It is our loving response, in word and action, to God's invitation to enter into a relationship made possible through the work of Jesus Christ and the witness of the Holy Spirit.
- At St Catherine's we aim to provide a pathway for growth in the knowledge and love of Jesus Christ. We acknowledge for the requirement that there must be a daily act of worship for all pupils. Collective Worship is timetabled and delivered daily from EYFS to KS2.
- Daily Collective Worship will help children develop a spirit of prayer; ensure that prayer and worship form a highly significant and integral part of daily life; provide opportunities for quiet reflection and meditation.

In KS2, worship will be between 7-10 minutes and will include:

- Simple reflection and discussion of the Gospel that is shared weekly
- Power points related to Margaret Carswell units
- Examen
- Prayer through meditation
- Power points linked to the Diocesan resources
- Celebrations and reflections of the week, with ritual and variety
- The celebration of sacramental liturgies power point linked to the Diocesan resources

Relationships & Health Education

- ▣ Ten Ten's new programme for Catholic primary schools, **Life to the Full**, teaches Relationships Education and Health Education.
- RHE is now a statutory subject for all schools
- We are embracing “the challenges of creating a happy and successful adult life” by giving pupils knowledge “that will enable them to make informed decisions about their wellbeing, health and relationships” (DFE Statutory Guidance).
- **Life to the Full** is a fully resourced Scheme of Work in Relationships Education for Catholic primary schools which embraces and fulfils the new statutory curriculum. Children will revisit the same topics at an age-appropriate stage through their school life.
- The programme includes:
 - ▣ **Lesson plans** for EYFS to Year 6; **High-quality videos** created by Ten Ten specifically for UK- based Catholic primary schools; **Programme of prayer** and worship music to accompany the scheme of work; **Online Parent Portal** for links to home.

Educational Visits

- ▣ Residential – Tolmers. 17th – 20th May 2022.
- ▣ Visits to Westminster Cathedral December & June (if permitted)
- ▣ Year 6 treat trip tbc
- ▣ Further visits related to curriculum (Maya Workshop, Zoo Lab, Victorian School Day, RAF Museum)

Expectations in Year 6

- ▣ High expectations of appearances (uniform, PE kit and hairstyles) and behaviour. This includes the Summer term
- ▣ Preparing children for secondary school
- ▣ Independent learning – Applying growth mindset
- ▣ Responsibilities – Prefects, House Captains, School Council
- ▣ All are role models for younger children
- ▣ To be organised and prepared for lessons

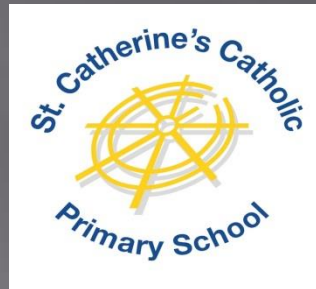


Expectations in Year 6

- ▣ Independent Travellers – forms and procedures
- ▣ Mobile phones – School & Home “Whatsapp!”
- ▣ Parents’ use of phones in school



Has anybody got any questions?



SATs

- ▣ Week commencing 9th May 2022
- ▣ Maths papers – including arithmetic paper
- ▣ English papers (Comprehension & Inference)
- ▣ Grammar, punctuation and spelling
- ▣ Any children who are working below the expected standard will not sit the SATs but will receive a Teacher assessment and will be included in the results. We will inform you if this applies to your child.



Home Learning

- ▣ Ofsted say that homework should only be set if it's appropriate to the needs of the children. This year we really want to focus on spelling rules, times tables and reading fluency and comprehension
- ▣ Weekly spellings will be sent home
- ▣ Children are still permitted to use Purple Mash to access the times tables games and anything else to support their learning
- ▣ Emails will be sent every Thursday informing you of the learning for the following week
- ▣ We would like your child to be regularly practising their times tables to improve fluency and understanding
- ▣ If your child is confident and adept at these, he/she will be able to apply these skills across the whole of his/her learning

Home Learning

- ▣ A recommended reading list will be emailed home, but if you would like to see more recommendations a good site to investigate is:
www.lovereadings4kids.co.uk
- ▣ After Christmas, your child will be sent home with some SATs revision books. They will be directed each night to complete set pages which they will then mark, in school, the following morning

Transition into Year 7

- ▣ High expectations in appearance (uniform and hairstyles) and behaviour
- ▣ Mobile phones
- ▣ Barnet Secondary Transfer Packs
- ▣ Visits from Year 7 Form teachers
- ▣ Circle Time opportunities to discuss concerns, worries and highlights
- ▣ Transport for London speaking about preparing to travel to your new school

Safeguarding



- ▣ Safeguarding Policy

- Keeping Children Safe in Education

- ▣ Designated Safeguarding Officers

- Miss Kelly
- Mrs Ward
- Miss Evans
- Mrs Whatley

E-Safety is Paramount

- ▣ E – Safety Policy (on website)
- ▣ E-safety curriculum
- ▣ Does your child have unsupervised access to a mobile, ipad, laptop or computer?
- ▣ www.thinkuknow.co.uk
- ▣ Parental Controls
- ▣ Please inform us if you are aware of a child using it incorrectly, we have a responsibility to report it.



Acceptable Use Agreement

- ▣ All children will need to be made aware of the updated Acceptable Use Agreement.
- ▣ The document outlines the expectations of how children should use technology and equipment in the school and in relation to school in their wider lives.
- ▣ At school we will dedicate a session to explaining the document, why it is necessary and its implications.
- ▣ Children will then sign the document saying that they have read and understood the agreement.
- ▣ A record will be kept on file.

Communication/ Information



- ▣ Birthdays / time keeping (registers)
- ▣ Website
- ▣ Newsletter
- ▣ Texting Service
- ▣ E-mails
- ▣ Parent Consultations – later on, likely via Zoom
- ▣ Phone call appointments via the office. Messages received from the slope at drop off
- ▣ After School Clubs start next week

Has anybody got any questions?

Thank you for joining us today.

We look forward to working in partnership with you to support your children in reaching their full potential in Year 6.

